

# Capital Asset Advisory Committee 2018 Capital Improvement Program Financial Status as of June 15, 2021

June 17, 2021

# 2018 CAPITAL IMPROVEMENT PROGRAM – FINANCIAL STATUS 6/15/2021

## Forecasted Revenue

### First Issuance

\$	326,490,000	Bond Issuance
\$	50,165,349	Premium on First Bond Issuance
\$	(1,655,349)	Issuance Costs
\$	11,769,748	Interest Through April 2021, net of bank fees
<b>\$</b>	<b>386,769,748</b>	

### Second Issuance

\$	240,510,000	Bond Issuance
\$	68,309,148	Premium on First Bond Issuance
\$	(1,293,367)	Issuance Costs
\$	112,212	Interest Through April 2021, net of bank fees
<b>\$</b>	<b>307,637,993</b>	

### Capital Transfer

\$	51,353,182	FY 2019, 2020 & 2021 Transfers from General Fund less COP Principal & Interest
\$	83,601,924	Forecasted FY 2022, 2023, 2024, 2025 Transfers from General Fund Less COP Principal & Interest
<b>\$</b>	<b>134,955,106</b>	

TBD Future Interest Earnings

---

**\$ 829,362,847** Preliminary Revenue

# 2018 CAPITAL IMPROVEMENT PROGRAM – FINANCIAL STATUS 6/15/2021

## Expenditures

As of June 15, 2021

As of May 15, 2021

\$ 318,747,820	All expenditures to date, first issuance		
\$ 9,489,261	All expenditures to date - second issuance		
<b>\$ 328,237,081</b>	<b>Total Expenditures</b>	<b>\$312,491,397</b>	Total Expended - All projects
\$ 61,270,076	All encumbrances, first issuance		
\$ 71,857,040	All encumbrances, second issuance		
<b>\$ 133,127,116</b>	<b>Total Encumbrances</b>	<b>\$138,491,089</b>	Total Encumbered - All projects

First issuance: 81% of bond proceeds spent (net of retainage)

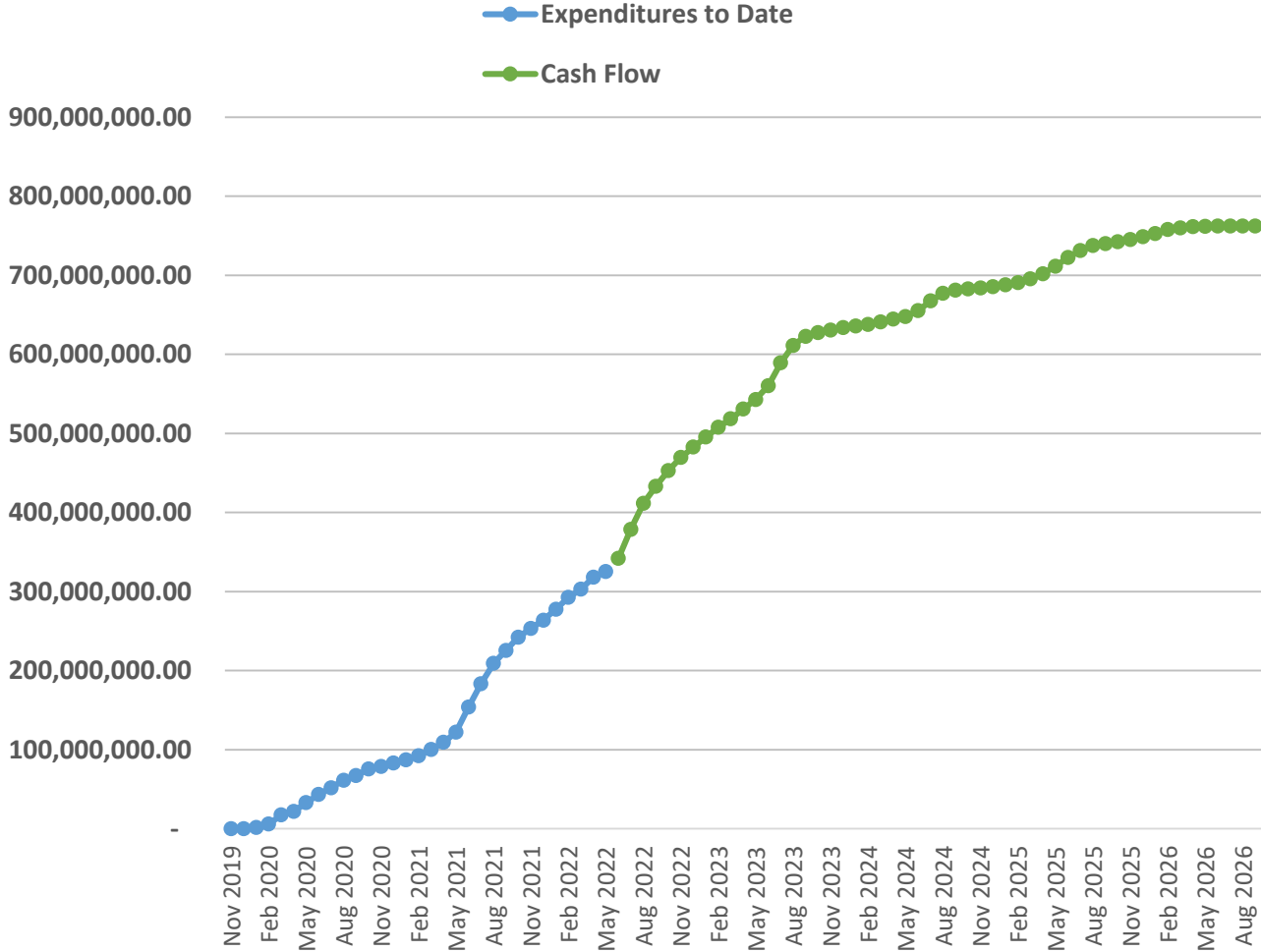
Second issuance: 3% of bond proceeds spent (net of retainage)

## Charter

\$ 46,577,597	Total Expended - Charter	\$45,469,151	Total Expended - Charter
\$ 2,415,074	Total Encumbered - Charter	\$3,074,737	Total Encumbered - Charter

# 2018 CAPITAL IMPROVEMENT PROGRAM – FINANCIAL STATUS 6/15/2021

## Cash Flow & Expenditures to Date



## 2018 CAPITAL IMPROVEMENT PROGRAM – FINANCIAL STATUS 6/15/2021

Project Type	2019	2020	2021	Total
New Buildings			2	2
Additions & Renovation		3	10	13
Renovations (E&FR)	3	20	33	56
Acquisitions	1			1
Track, Turf, Tennis Cts.	8	6	4	18
FF&E	4	12	29	45
District Wide (Paving, Playgrounds, Roofing, Flooring, Cameras, LED lighting, HVAC Projects)	4	7	15	26
Charters	5		1	6
Hazardous Material		2		2
	25	50	94	169

Work completed in calendar year.

# 2018 CAPITAL IMPROVEMENT PROGRAM – FINANCIAL STATUS 6/15/2021

## Work in Progress & Completion Dates

Alameda Addition / Renovation	8/22	Artificial Turf & Tracks @ 4 HS	9/21
Pomona HS Addition/Renovation	8/22	29 Efficiency & Future Ready	8/21
Marshdale ES Replacement	8/22	LED Replacement Phase II 11 Sites	9/21
D'Evelyn ES Addition / Renovation	8/22	7 Playgrounds, 5 Paving Projects	8/21
Columbine HS Aux Gym, Exterior Entry	8/21	3 Roofing Projects	8/21
Conifer HS Aux Gym	5/21		
Green Mountain HS Aux Gym	7/21		
Jefferson Jr./Sr. HS Addition / Renovation	8/21		
Kendrick Lakes ES Replacement	4/21		
Bell MS Addition	8/21		
Manning School Addition	8/21		
Parmalee ES Addition / Renovation	8/21		
Foster ES Addition / Renovation	8/21		
Warren Tech South	8/21		
Wayne Carle MS Addition	8/21		
Lumberg ES Addition / Renovation	8/21		

# 2018 CAPITAL IMPROVEMENT PROGRAM – FINANCIAL STATUS 6/15/2021

## In Design

Evergreen HS Renovation	GMP 8/15
Evergreen MS Renovation	Bid 7/29
Powderhorn Addition/Renovation	Bid 6/15
Prospect Valley ES Replacement	Bid 6/24
Ralston Valley HS Addition/Renovation	Bid 9/9
Standley Lake HS Addition/Renovation	Bid 7/15
Jeffco Open School Addition/Renovation	Bid 8/26
Furniture, Fixtures & Equipment (FF&E) 14 Sites	Various



# CAAC Design and Construction Update

6-17-2021





# 2021 Projects

## New Buildings & Additions

# Kendrick Lakes ES – Replacement Larson Incitti – GC Roche

New Building  
Complete

Old Building  
Demolition



# Conifer HS – Aux Gym Addition Cannon – CMGC FCI

Construction



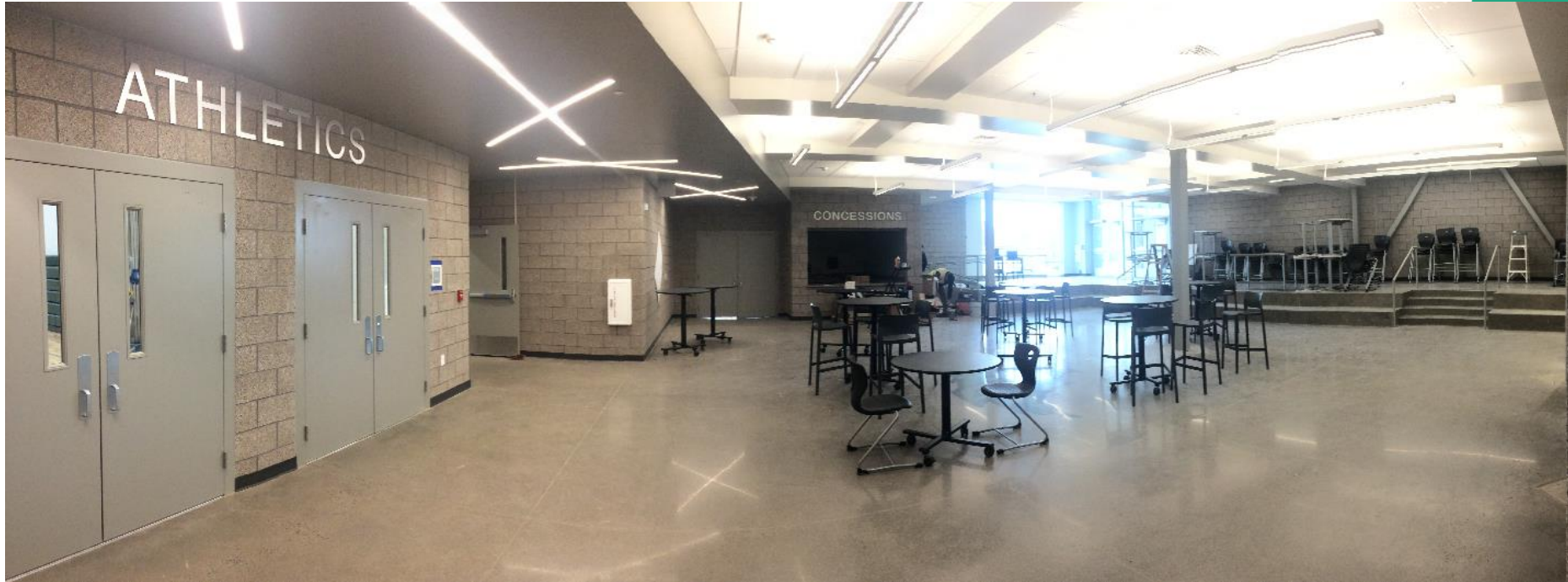
# Conifer HS – Aux Gym Addition Cannon – CMGC FCI

Construction



# Conifer HS – Aux Gym Addition Cannon – CMGC FCI

Construction



# Columbine HS – Aux Gym Addition EIDOS – CMGC Swinerton

Construction



# Columbine HS – Aux Gym Addition EIDOS – CMGC Swinerton

Construction



# Green Mountain HS – Aux Addition MOA – CMGC GE Johnson

Construction





# Green Mountain HS – Aux Addition MOA – CMGC GE Johnson

Construction



# Jefferson HS – Aux Gym Addition MOA – CMGC Haselden

Construction



# Jefferson HS – Aux Gym Addition MOA – CMGC Haselden

Construction



# Bell MS – 1 Story, 4 Classroom Addition Eidos – GC Golden Triangle

Construction



# Bell MS – 1 Story, 4 Classroom Addition Eidos – GC Golden Triangle

Construction



# CTE South – New Building HCM – GC JHL

Construction



Manning Opt – 1 Story –  
7 Classroom Addition  
AMD – GC Fransen Pittman

Construction



# Manning Opt – 1 Story – 7 Classroom Addition AMD – GC Fransen Pittman

Construction





# Wayne Carle – 2 Story – 8 Classroom Addition RB+B – GC Basset

## Construction Float Report



# Wayne Carle – 2 Story – 8 Classroom Addition RB+B – GC Basset

Construction



# Lumberg ES – 4 CR Addition MOA – CMGC Haselden

Construction



# Parmalee ES – 1 Story – 6 Classroom Addition OZ – GC Saunders

## Construction



# Alameda HS – Addition WOLD – CMGC Phipps

Construction



# Alameda HS – Addition WOLD – CMGC Phipps

Construction



# Foster ES – 1 Story – 7 Classroom Addition Larson Incitti – GC GE Johnson

## Construction Float Report



Foster ES – 1 Story –  
7 Classroom Addition  
Larson Incitti – GC GE Johnson

Construction





# Pomona HS – Aux Gym Addition Sybazz – CMGC Saunders

Construction



# Pomona HS – Aux Gym Addition Sybazz – CMGC Saunders

Construction



# Marshdale ES - Replacement

Construction

HCM – GC GH Phipps



# D'Evelyn – 8 CR Addition HCM – GC Himmelman

## Construction



# 2021 Efficiency Future Ready & DW projects

# Golden HS – Door Replacement EUA – GC MW Golden

Complete



# Brady - Efficiency Future Ready Alan Ford – GC Himmelman

## Construction Float Report



# Maple Grove ES Efficiency Future Ready RTA – GC Golden Triangle

Construction





# Kyffin ES Efficiency Future Ready Eidos – GC GH Phipps

Construction



Fitzmorris ES  
Efficiency Future Ready  
Eidos – GC Himmelman

Construction



# Lawrence ES Efficiency Future Ready Eidos – GC Bryan Construction

Construction



Deane ES  
Efficiency Future Ready  
LOA – GC GH Phipps

Construction



Lasley ES  
Efficiency Future Ready  
Treasor HL – GC PG Arnold

Construction



Patterson ES  
Efficiency Future Ready  
Treasor HL – GC PG Arnold

Construction



Patterson Cottages  
Efficiency Future Ready  
Treasor HL – GC PG Arnold

Construction



# Dennison ES Efficiency Future Ready Hollis & Miller- GC MW Golden

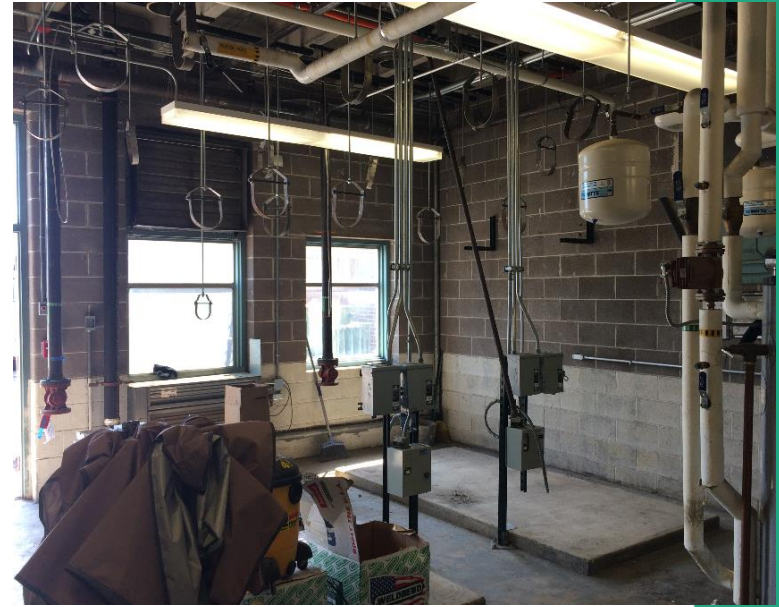
Construction





# Miller Special School Efficiency Future Ready Larson Incitti –GC Himmelman

Construction



Kullerstrand ES  
Efficiency Future Ready  
Larson Incitti – GC Himmelman  
Alt 2, 3 & 6

Construction



Ryan ES  
Efficiency Future Ready  
RB+B – GC PG Arnold

Construction



Sheridan Green ES  
Efficiency Future Ready  
RB+B – GC Himmelman

Construction



Vanderhoof ES  
Efficiency Future Ready  
EUA – GC MW Golden

Construction



Stott ES  
Efficiency Future Ready  
EUA – GC Himmelman

Construction



# Devinny ES

## Efficiency Future Ready

### DLH – GC Crossland Construction

Construction



# Carmody MS Alt A1 & A4 Efficiency Future Ready DLH –GC Mark Young

## Construction





Westridge ES  
Efficiency Future Ready  
OZ – GC Single Track

Construction



Everitt MS  
Efficiency Future Ready  
OZ - Bassett

Construction



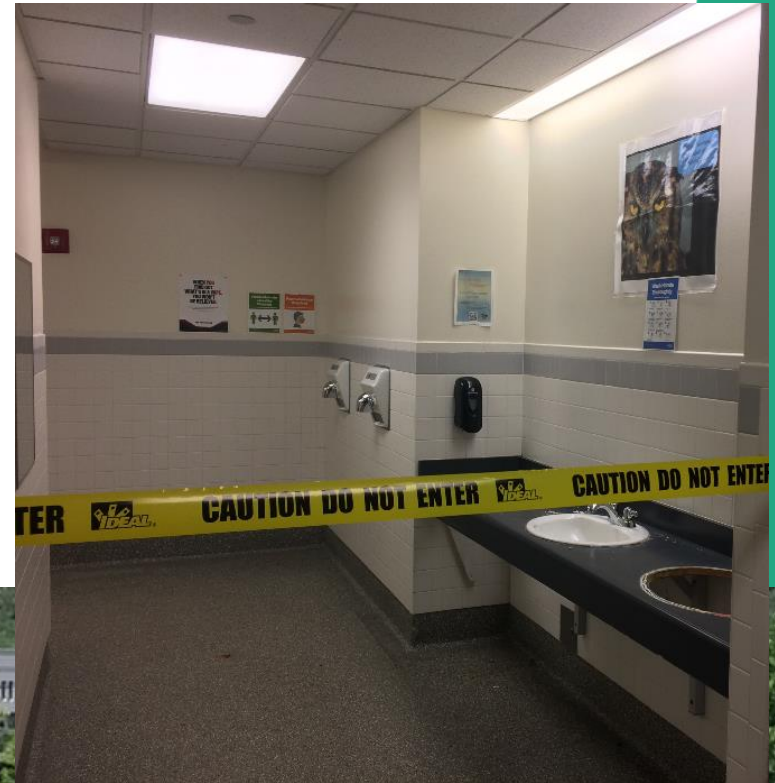
Chatfield HS  
Efficiency Future Ready  
Cannon - Haselden

Construction



# Dakota Ridge HS Efficiency Future Ready Cannon - Haselden

Construction



# DW Security Glass Installation 12 - Schools

Creighton MS

Rose Stein

Red Rocks ES

Mandalay MS

Weber ES

Moore MS

Meiklejohn ES

Drake MS

Ken Caryl MS

Dutch

Leawood ES

Conifer HS



# DW Tracks & Turf Fields HCM – CMGC Saunders

## Construction

Alameda HS 11/17/21

Wheat Ridge HS 11/3/21

Jefferson 11/24/21

Lumberg 9/2/21

D'Evelyn 11/17/21

D'Evelyn Opt - SR-DK – Arapahoe - COMPLETE

Fitzmorris ES - SR-DK – Arapahoe

Lawrence ES - SR-DK – United Materials

Fitzmorris



Lawrence



DW Roofing

Emory ES - WJE - Powers

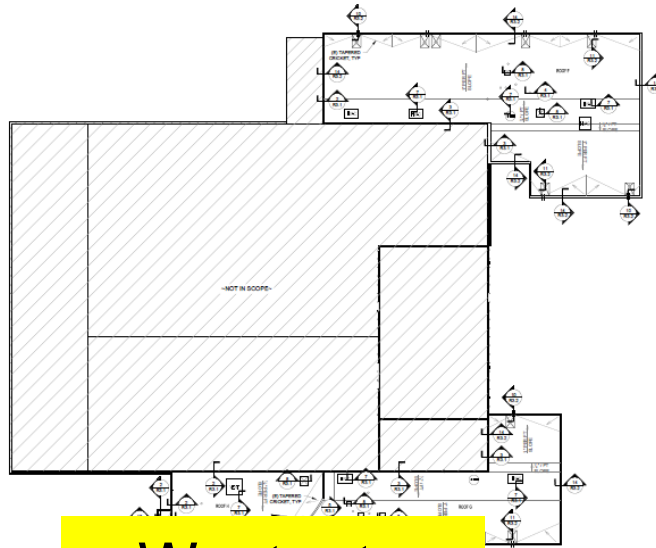
Westgate ES - WJE - United Materials

Stevens ES - WJE - Douglass

Construction



Emory



Westgate



Stevens



DW Mechanical – 5 Schools  
Elk Creek ES (RTU),  
Edgewater ES (Boiler), Peck ES  
Secrest ES (RTU's) , Thomson ES  
Columbine – US Engineering

Construction



Elk Creek ES



Peck



Edgewater



Secrest ES



Thomson

# DW LED 2021 – Ackerman – CMGC McKinstry

## Construction



1. 9/21 Edgewater ES
2. 9/8 Elk Creek ES
3. 7/28 Emory ES
4. 8/25 Kyffin ES
5. 9/21 Red Rocks ES
6. 8/11 Shaffer ES
7. 7/28 Stevens ES
8. 7/28 Stony Creek ES
9. 8/11 Thomson ES
10. 8/25 Warder ES
11. 9/8 West Jefferson ES

# DW – Paving West Jefferson ES, Red Rocks ES, Parmalee ES

Construction



# DW – Playgrounds I – Group A Kyffin ES, Red Rocks ES, Peck ES

Construction

## Design Concepts – T2

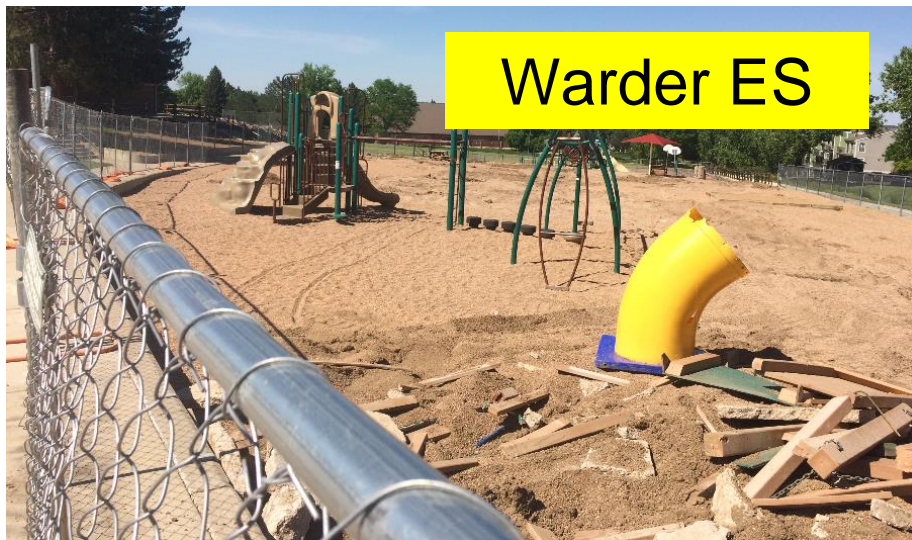


DW – Playgrounds I – Group B  
Warder ES, Secrest ES, Thomson ES  
Design Concepts – T2

Construction



Secrest ES



Warder ES



Thomson

DW – Playgrounds –  
Elk Creek ES, Normandy ES  
Shaffer ES

Lime Green – Arrow J

Construction

Normandy ES



Elk Creek



Shaffer ES



DW – Flooring –  
Emory – Shaffer, Red Rocks,  
Westgate, Peck  
Intergroup – PG Arnold

Construction

Shaffer ES



Red Rocks



Peck



Emory



Westgate ES



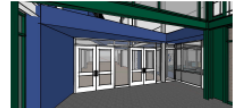
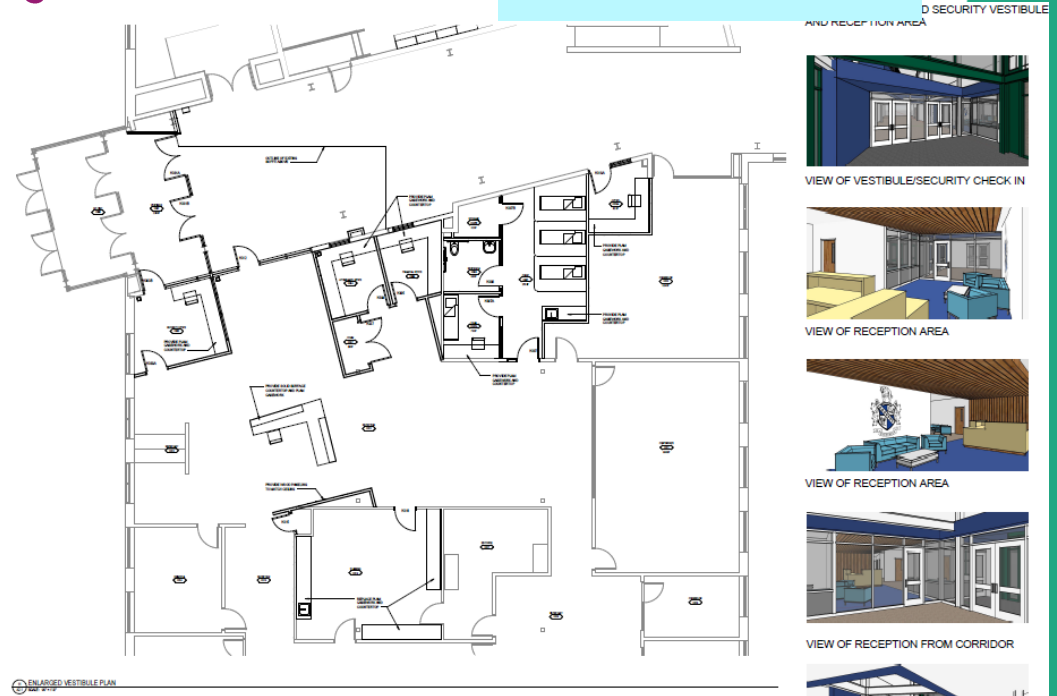
# 2022 Projects

## New Buildings & Additions



# Evergreen HS Efficiency Future Ready DLR – CMGC JHL

## Construction Documents



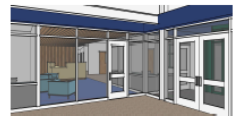
VIEW OF VESTIBULE/SECURITY CHECK IN



VIEW OF RECEPTION AREA



VIEW OF RECEPTION AREA



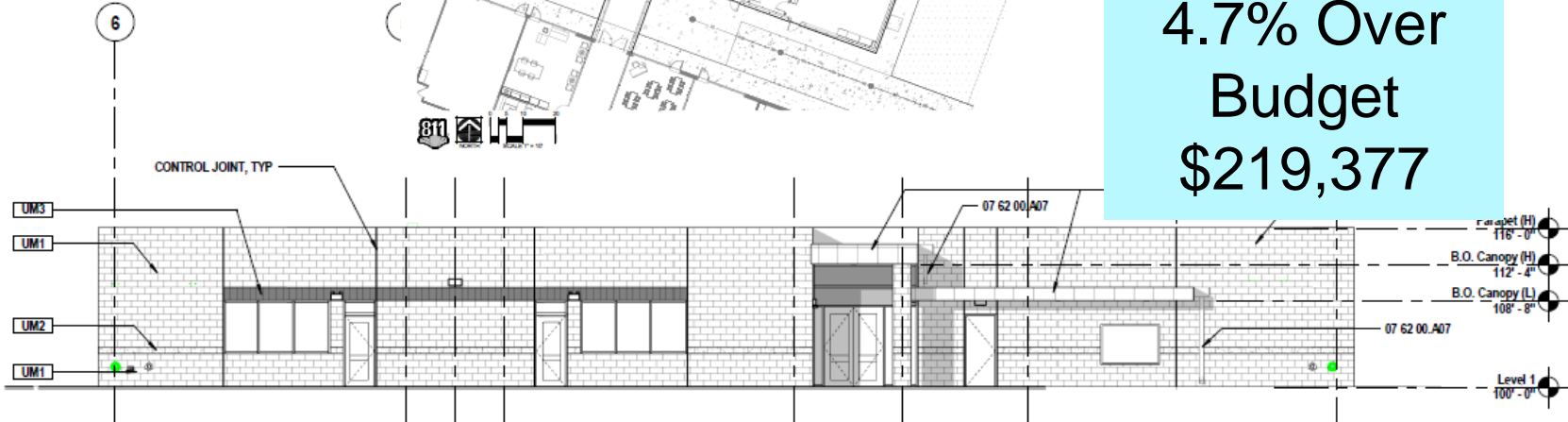
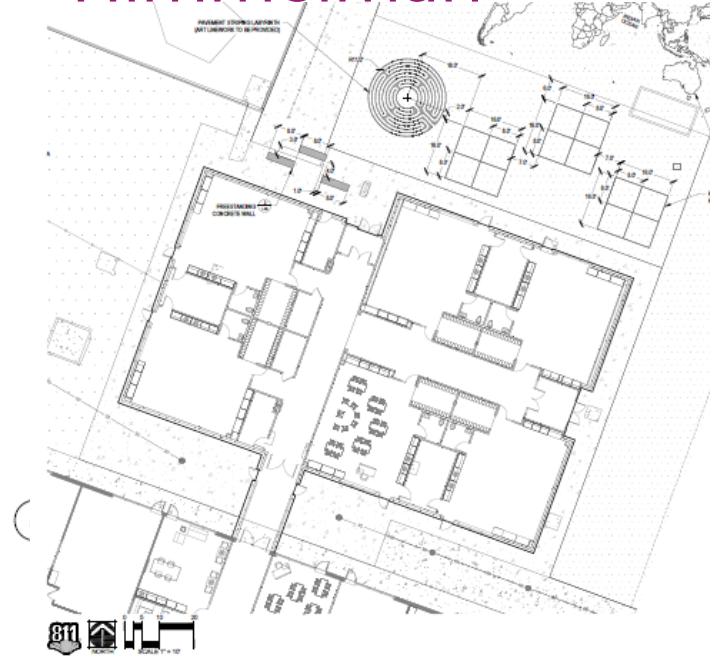
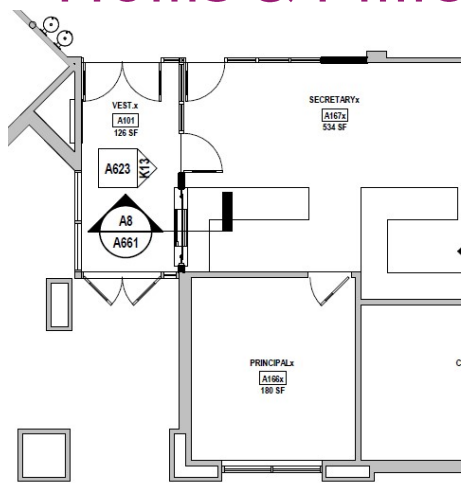
VIEW OF RECEPTION FROM CORRIDOR



VIEW OF VESTIBULE FROM CORRIDOR



# Powderhorn ES - Addition Hollis & Miller – Himmelman



**N6** Scale 1/8" = 1'-0" North Elevation

Construction

Bid

\$4,690,000

Budget

\$4,470,623

4.7% Over  
Budget

\$219,377

# Prospect Valley ES - Replacement MOA - TBD

Construction  
Documents  
Bids  
6/29/2021



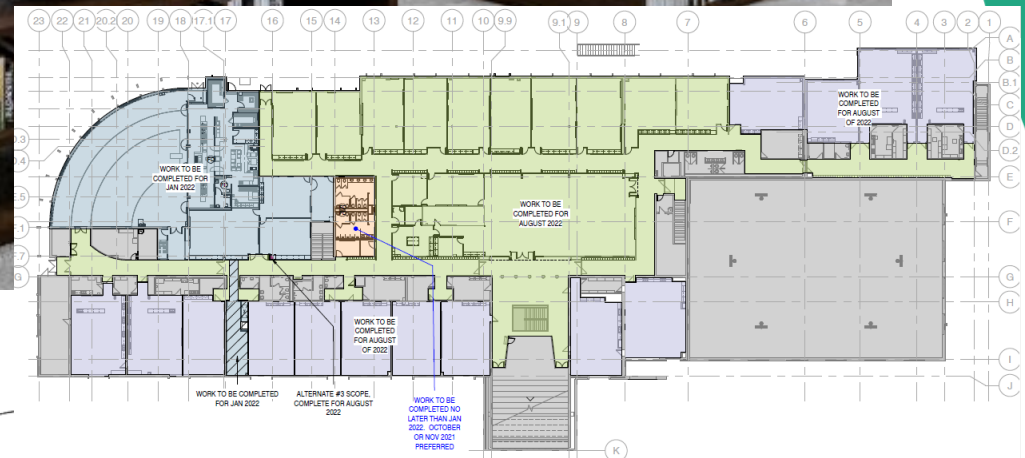
# Standley Lake HS - Addition Cannon -TBD

Construction  
Documents  
Bids  
7/15/2021



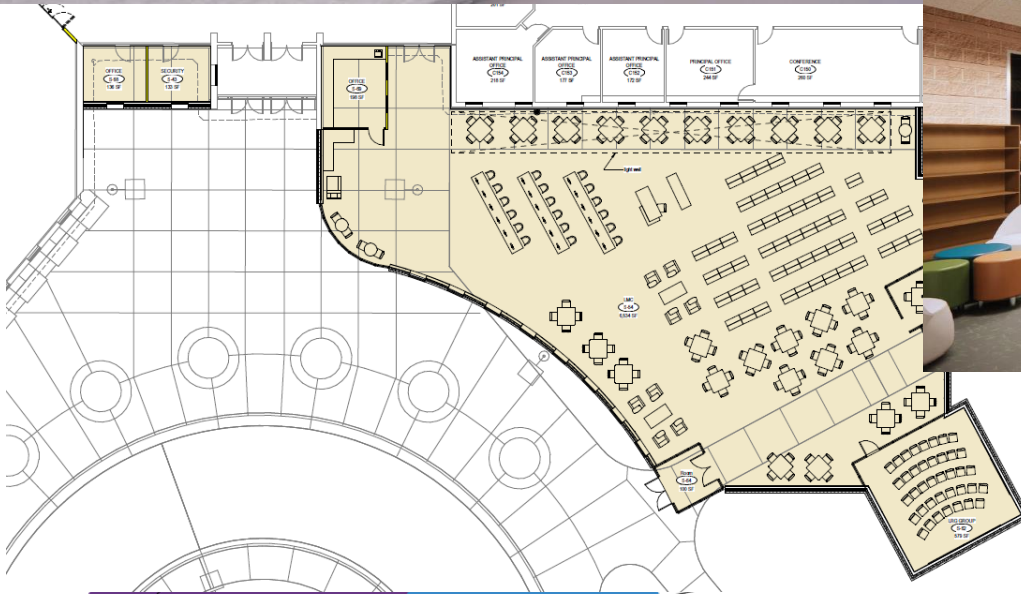
# Evergreen MS Efficiency & Future Ready AMD - TBD

Construction  
Documents  
Bids  
7/29/2021



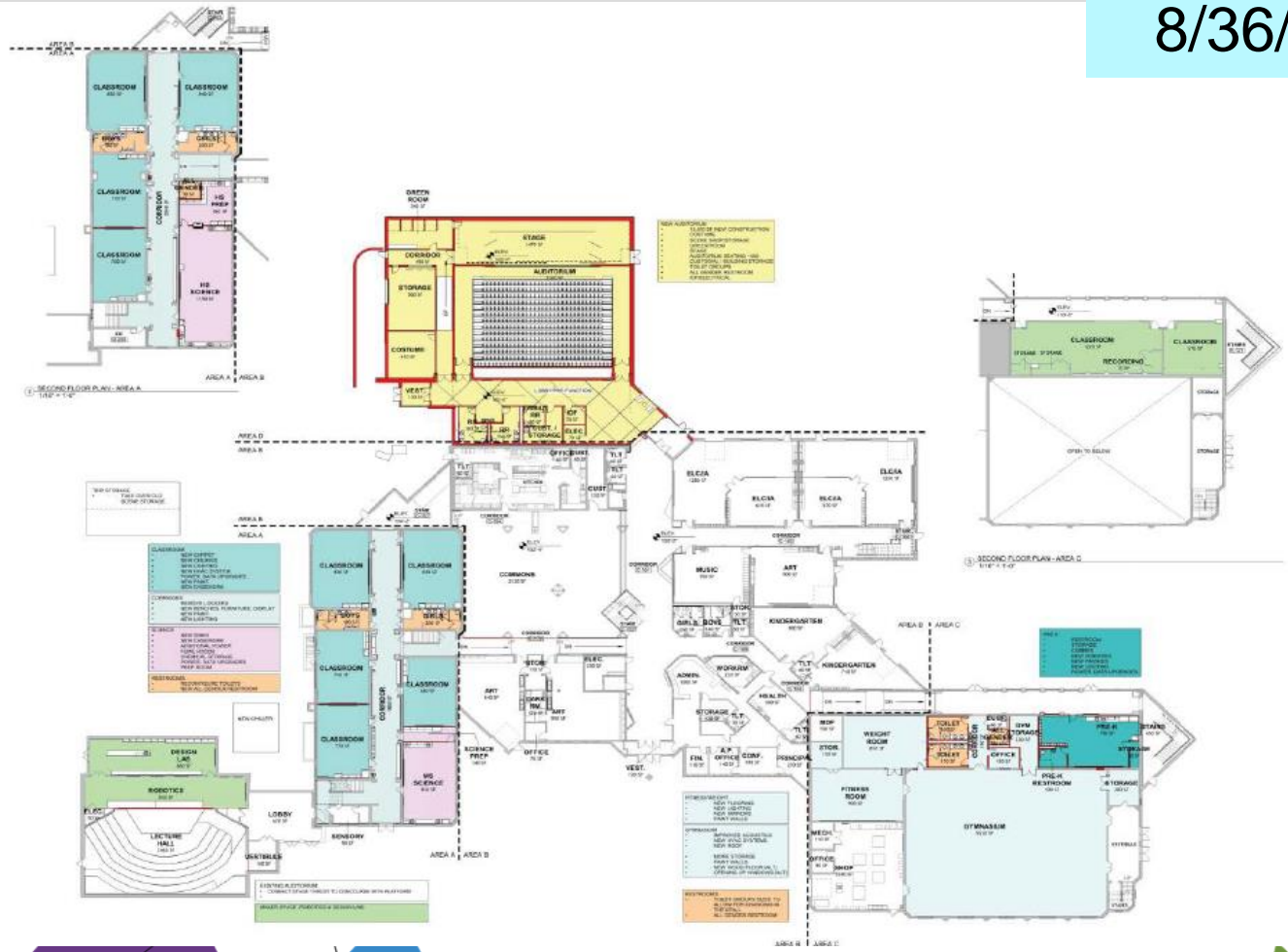
# Ralston Valley HS - Addition EUA - TBD

Construction  
Documents  
Bids  
8/12/2021



# Jeffco Open - Addition HCM - TBD

Design  
Development  
Bids  
8/36/2021



# 2022

# 44 - Efficiency

# Future Ready

# &

# DW projects



# 2022 Projects

Location	Articulation	Sched	Type	Description	A/E	Project Manager	Possible Replacement
Mortensen	Chatfield	9/1/21	ES	Efficiency & Future Ready	OZ	Bernadette Kelly	
Shaffer	Chatfield	9/1/21	ES	Efficiency & Future Ready	OZ	Bernadette Kelly	
Stony Creek	Chatfield	9/1/21	ES	Efficiency & Future Ready	OZ	Bernadette Kelly	
DW Playground 2022-I	JDW	9/1/21	DW	4 Schools - Peiffer, Governor's Ranch, Mt. Carbon, Glennon Heights	Design Concepts / Lime Green	Bernadette Kelly	
DW Playground 2022-II	JDW	9/1/21	DW	3 Schools - Campbell, Swanson, Fairmount	Design Concepts / Lime Green	Bernadette Kelly	
DW LED Lighting 2022	JDW	9/1/21	DW	13 Schools - Lawrence, Brady, Bradford North, Bradford South, Ute Meadows, Leawood, Normandy, Rooney Ranch, Creighton MS, Moore MS, Weber ES, Meiklejohn, West Woods	Ackerman	Bill Thaemert	
DW Paving 2022	JDW	9/1/21	DW	5 Schools - Campbell, Peiffer, S Lakewood, Little, Falcon Bluffs	JVA	Bill Thaemert	
Creighton MS	Lakewood	9/1/21	MS	Efficiency & Future Ready	Larson Incitti	Danelle Berzoza	Replaced Oberon
Peck	Arvada	9/1/21	ES	Efficiency & Future Ready	Larson Incitti	Danelle Berzoza	
Secrest	Arvada	9/1/21	ES	Efficiency & Future Ready	Larson Incitti	Danelle Berzoza	
DW Elevator Upgrades 2022	JDW	9/1/21	DW	Elevator Upgrades 2022	Kone	David Curnow	
DW Modular Bldg Removal 2022	JDW	9/1/21	DW	Modular Bldg Removal 2022	In House	David Curnow	
Long View HS	OPT	9/1/21	ES	Efficiency & Future Ready	RTA	Doug Cooper	
Shelton	Golden	9/1/21	ES	Efficiency & Future Ready	RTA	Doug Cooper	
Bear Creek High	Bear Creek	9/1/21	HS	Efficiency & Future Ready	MOA	Ed Huszcza	Replaced Edgewater
Blue Heron	Dakota Ridge	9/1/21	ES	Efficiency & Future Ready	MOA	Ed Huszcza	
Colorow	Dakota Ridge	9/1/21	es	Efficiency & Future Ready	MOA	Ed Huszcza	
Lakewood High	Lakewood	9/1/21	HS	Efficiency & Future Ready	HCM	Hilary Porter	Replaced Molholm
Mt Evans	OELS	9/1/21	OELS	Efficiency & Future Ready	HCM	Hilary Porter	
Windy Peak	OELS	9/1/21	OELS	Efficiency & Future Ready	HCM	Hilary Porter	
DW Mechanical 2022	JDW	9/1/21	DW	Campbell, Fairmount, Falcon bluffs MS, Little, Van Arsdale	Columbine Engineering	Kimber Preece	
North Arvada MS	Arvada	9/1/21	MS	Efficiency & Future Ready	Eidos	Maggie Anderson	
Slater Elementary	Lakewood	9/1/21	ES	Efficiency & Future Ready	Eidos	Maggie Anderson	
Wheat Ridge HS	Wheat Ridge	9/1/21	HS	Efficiency & Future Ready + Turf Replacement	Eidos	Maggie Anderson	
Wilmore Davis	Wheat Ridge	9/1/21	ES	Efficiency & Future Ready	Eidos	Maggie Anderson	

# 2022 Projects

Location	Articulation	Sched	Type	Description	A/E	Project Manager	Possible Replacement
Emory	Alameda	9/1/21	ES	Efficiency & Future Ready	Treanor HL	Pam Grover	
Red Rocks	Bear Creek	9/1/21	ES	Efficiency & Future Ready	Treanor HL	Pam Grover	
Westgate	Bear Creek	9/1/21	ES	Efficiency & Future Ready	Treanor HL	Pam Grover	
DW Flooring 2022-II	JDW	9/1/21	DW	7 Schools - Swanson, Glennon Heights, S Lakewood, Little, Parr, Van Arsdale, Pennington	Treanor HL	Pam Grover	
Awest HS	Awest	9/1/21	HS	Efficiency & Future Ready	LOA	Sam Miller	
Mandalay	Standley Lake	9/1/21	ES	Efficiency & Future Ready	RB+B	Sam Miller	
Warder	Pomona	9/1/21	ES	Efficiency & Future Ready	RB+B	Sam Miller	
Warren OTC North	Awest	9/1/21	OTC	Efficiency & Future Ready	LOA	Sam Miller	
Bergan Valley	Evergreen	9/1/21	ES	Efficiency & Future Ready	H&M / BVH / EUA	Ted Hagan	
Elk Creek	Conifer	9/1/21	ES	Efficiency & Future Ready	H&M / BVH / EUA	Ted Hagan	
Golden High	Golden	9/1/21	HS	Efficiency & Future Ready	H&M / BVH / EUA	Ted Hagan	Replaced Bergan Meadow
Mitchell	Golden	9/1/21	ES	Efficiency & Future Ready	H&M / BVH / EUA	Ted Hagan	
West Jeff	Conifer	9/1/21	ES	Efficiency & Future Ready	H&M / BVH / EUA	Ted Hagan	
Green Mountain	Green Mtn	9/1/21	ES	Efficiency & Future Ready	Sybazz	Troy Antill	
Stevens WR 5-8	Wheat Ridge	9/1/21	ES	Efficiency & Future Ready	Sybazz	Troy Antill	
Thomson	Arvada	9/1/21	ES	Efficiency & Future Ready	Sybazz/ Intergroup	Troy Antill	
DW Flooring 2022-I	JDW	9/1/21	DW	7 Schools - Dear Creek MS, Falcon Bluffs MS, Summit Ridge MS, Peiffer, Governor's Ranch, Mt Carbon, Rooney Ranch	Sybazz	Troy Antill	
DW Roofing 2022	JDW	9/1/21	DW	5 schools - Summit Ridge MS, Campbell, Fairmount, S Lakewood, Little, Parr, Pennington	Cave, WJE, SRDK, Roof Tech	Troy Antill	
DW Security Glass 2022	JDW	9/1/21	DW	11 schools - Swanson, Awest, Campbell, Fairmount, BCK8, Summit Ridge MS, Glennon Heights, S Lakewood, Little, Parr, Pennington	In House	Troy Antill	

# Next Meeting 7/15/21